

ZyAIR Public/Commercial Hotspot

Presented by:

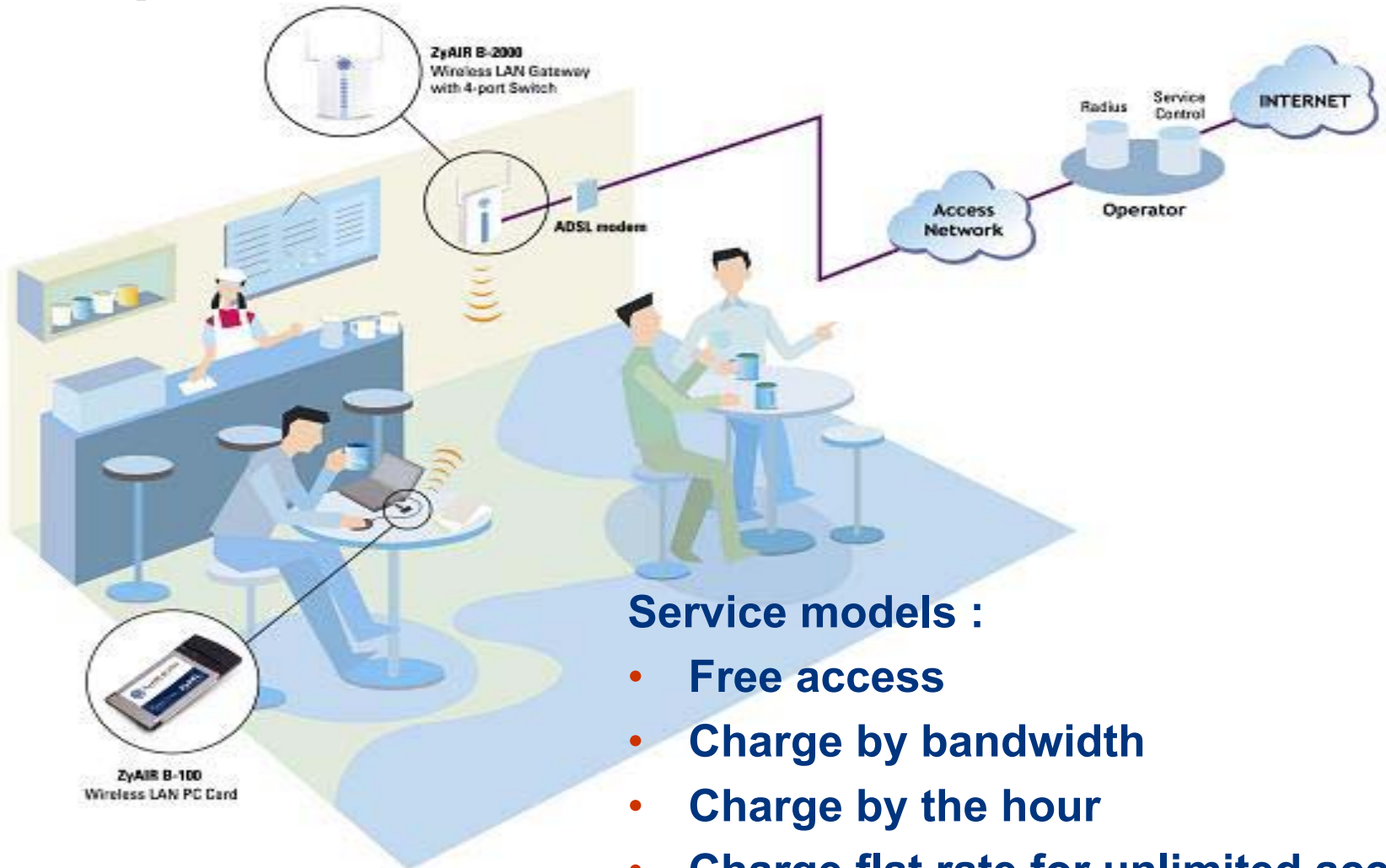
John Castreje
ZyXEL Communications, Inc.

Hotspot Opportunities

Wireless public networks enable people on the go to stay connected in “hot spots” such as airports, hotels, coffee shops, etc.



Hot Spot Public Network



Service models :

- Free access
- Charge by bandwidth
- Charge by the hour
- Charge flat rate for unlimited access

Building a HOT SPOT business

Equipment:

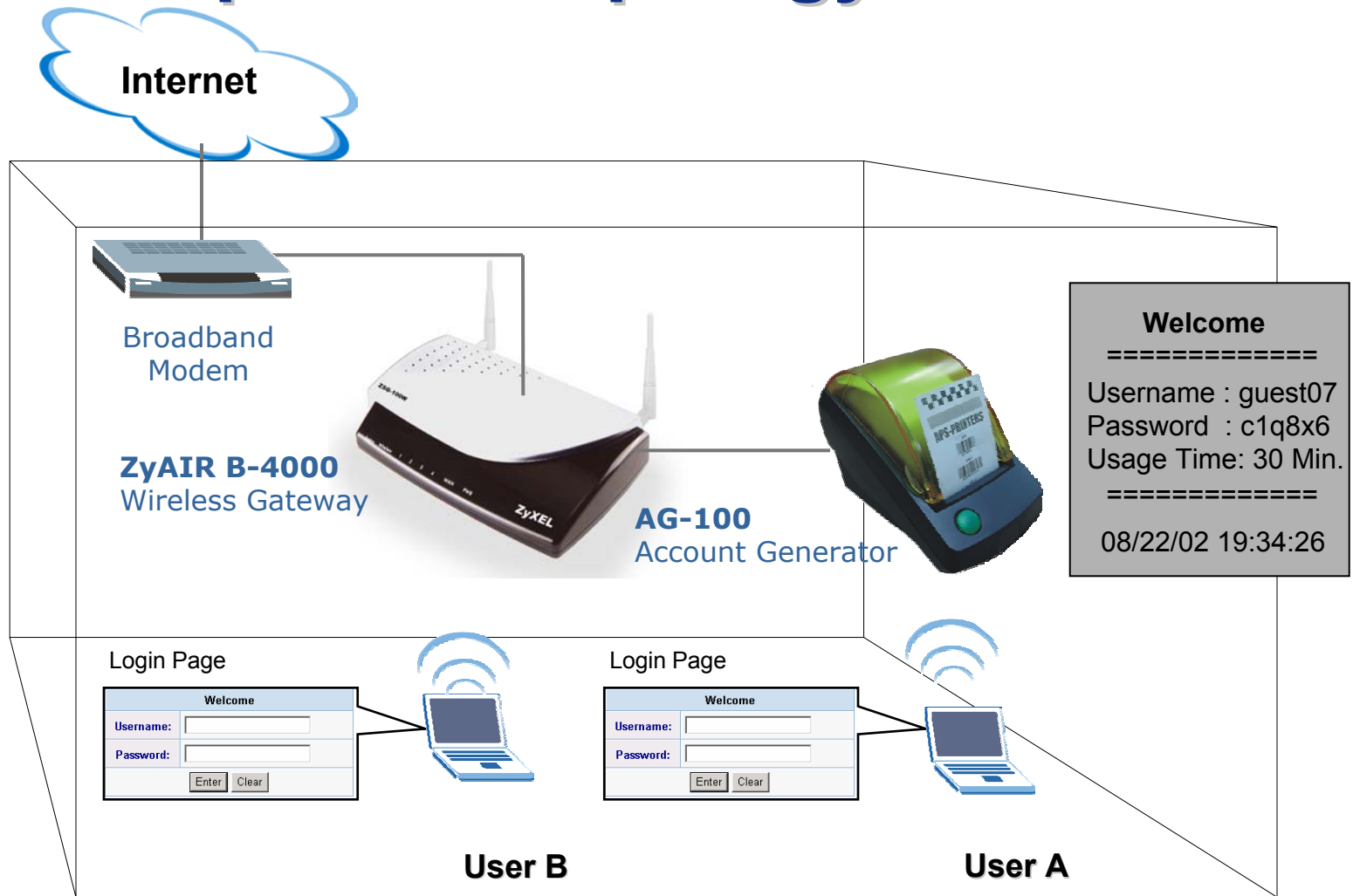
- One WAN Modem
- One Service Gateway + one Printer
- One Wireless Access Point
- Wireless NIC cards or Wireless Ethernet Adapters



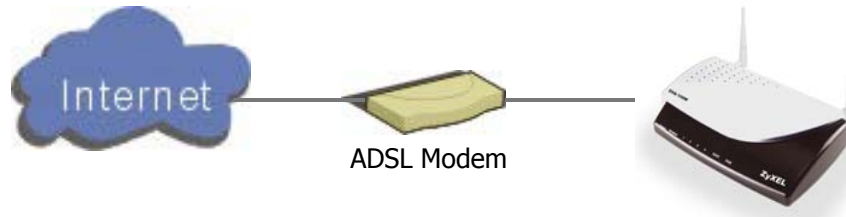
Applications:

- Coffee Shop / Hotel's Public Areas / Hotel's VIP Room / Bookstore / Library / Trade Center / Airport

EZ Hotspot Kit Topology



PnP Internet Access with "Zero Configuration"



B-4000
Wireless Access Controller



HTTP Proxy



DHCP Client



Fixed Private IP



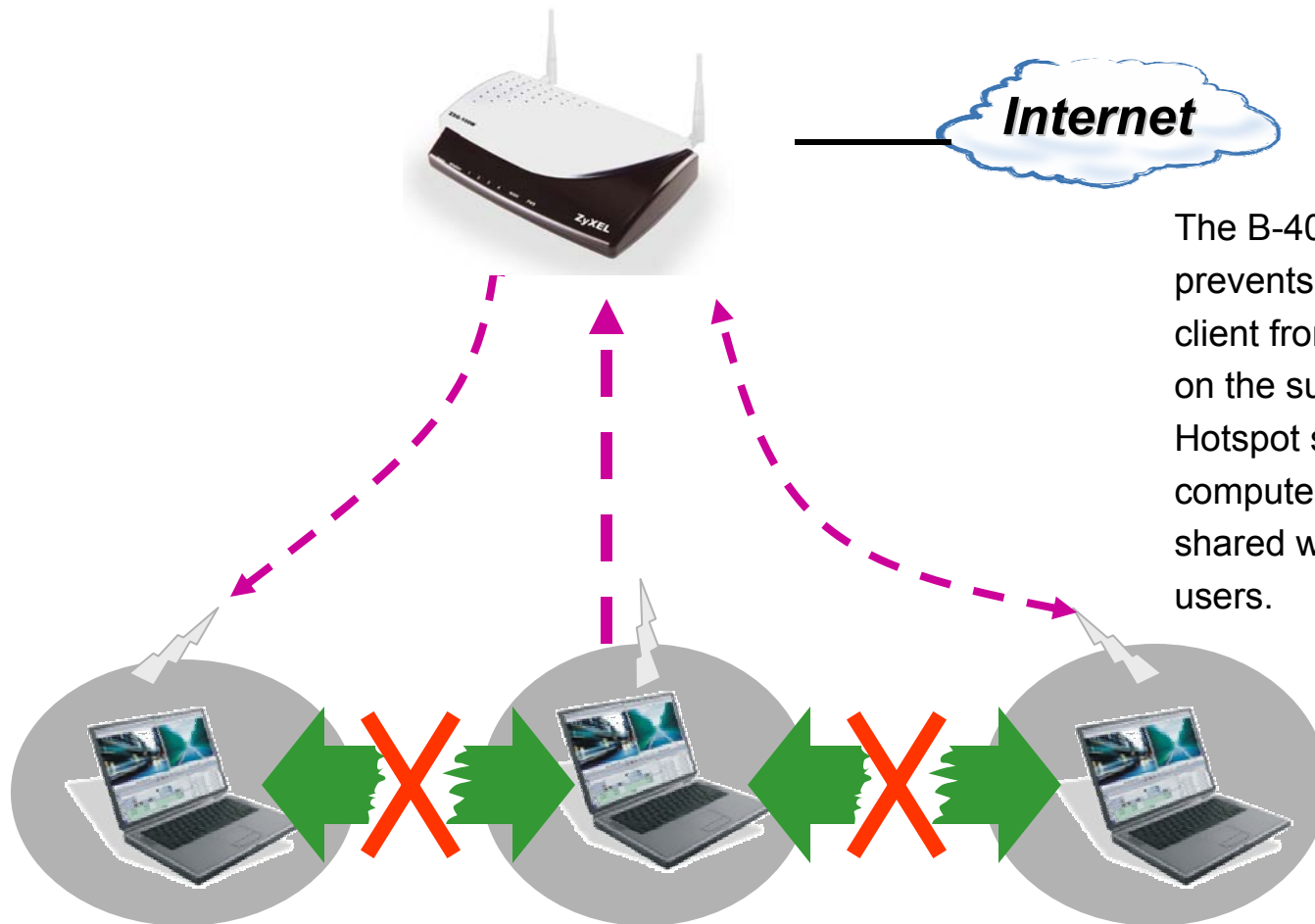
Fixed Global IP



Dynamic IP

Even Subscriber's PCs with static IP address or using Http Proxy to access internet do not need to be re-configured.

Layer 2 Isolation for Wireless and Wired Clients



The B-4000's Layer 2 Isolation prevents wireless or wired LAN client from accessing other PCs on the subnet. This improves Hotspot security by keeping a computer's data from being shared with other un-trusted users.

Login Page Redirection / Customization

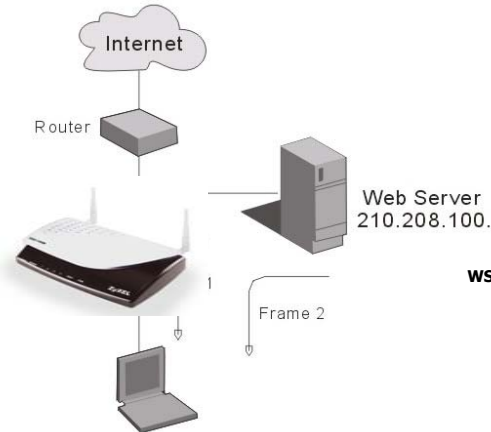


Customize Login UI											
Selection	<input type="radio"/> Standard <input checked="" type="radio"/> Advanced <input type="radio"/> Frame										
Welcome Image	<input type="radio"/> None <input checked="" type="radio"/> Default (Welcome)										
Welcome Slogan	<input type="text"/>										
Page Background	<input type="radio"/> None <input checked="" type="radio"/> Background Color <input type="text"/> View Color Grid										
Article	<input type="text"/>										
Article Text Color	<input type="text"/> View Color Grid										
Article Background Color	<input type="text"/> View Color Grid										
Information	<input type="text"/>										
Comments	<input type="text"/>										
Registration Prompt	<input type="text"/> View Color Grid										
Frame Setting	<table border="1"> <tr> <td>Up Frame</td> <td><input type="text"/></td> </tr> <tr> <td>Down Frame</td> <td><input type="text"/></td> </tr> <tr> <td>Web Server IP</td> <td><input type="text"/></td> </tr> <tr> <td>URL Link</td> <td><input type="text"/></td> </tr> <tr> <td>Background Color</td> <td><input type="text"/> View Color Grid</td> </tr> </table>	Up Frame	<input type="text"/>	Down Frame	<input type="text"/>	Web Server IP	<input type="text"/>	URL Link	<input type="text"/>	Background Color	<input type="text"/> View Color Grid
Up Frame	<input type="text"/>										
Down Frame	<input type="text"/>										
Web Server IP	<input type="text"/>										
URL Link	<input type="text"/>										
Background Color	<input type="text"/> View Color Grid										

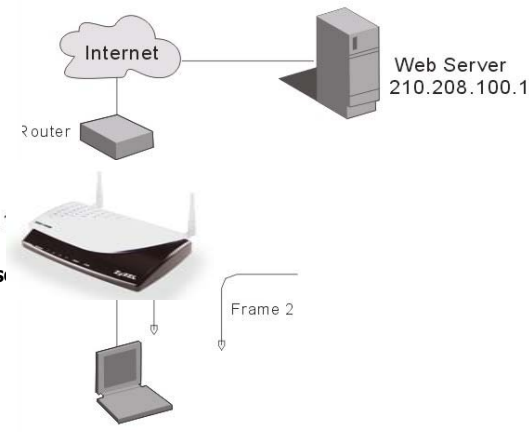
210.208.100.1

<http://210.208.100.1/hotel/hilton.htm>

Architecture 1



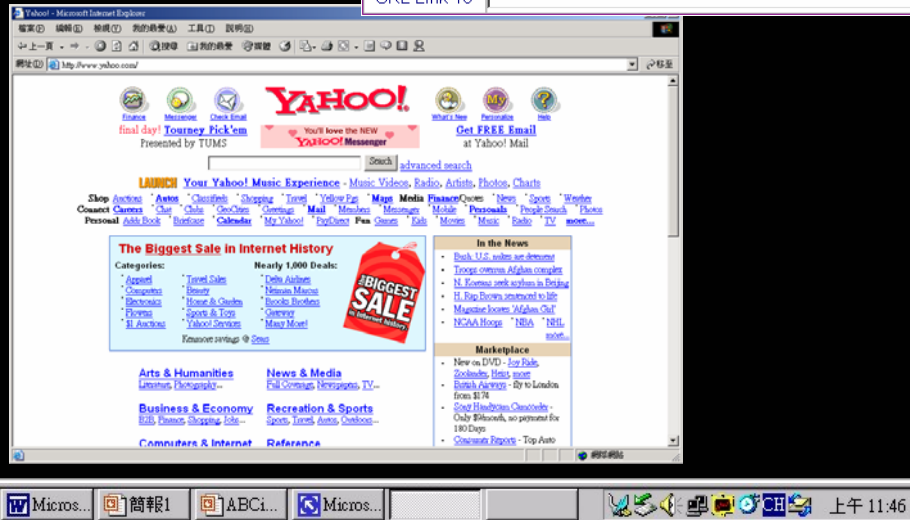
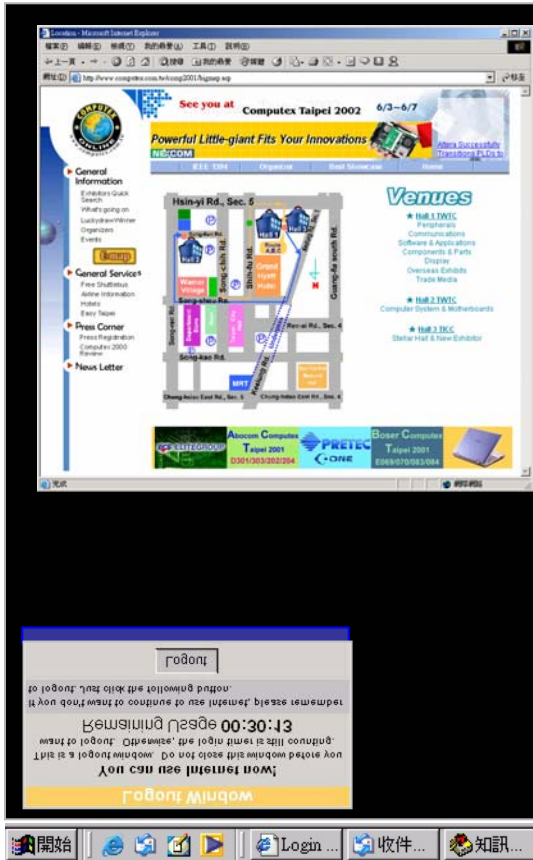
Architecture 2



Advertisement Link

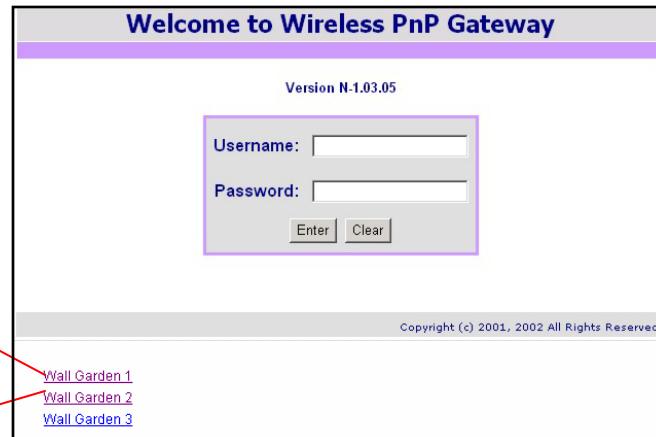
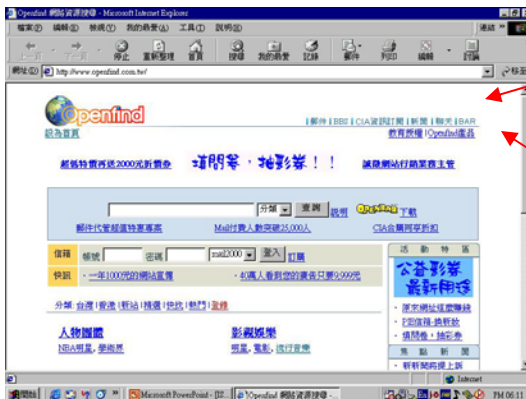
Allows Service Providers to input 10 URL links for Advertisement Link purpose. When users login successfully, the B-4000 will re-direct the home page to specified URL link. (Random re-direct)

Advertisement Link Configuration	
Frequency	<input checked="" type="radio"/> One Time Only <input type="radio"/> Multi-sending Interval <input type="text" value="0"/> Min(s)
URL Link 1	<input type="text"/>
URL Link 2	<input type="text"/>
URL Link 3	<input type="text"/>
URL Link 4	<input type="text"/>
URL Link 5	<input type="text"/>
URL Link 6	<input type="text"/>
URL Link 7	<input type="text"/>
URL Link 8	<input type="text"/>
URL Link 9	<input type="text"/>
URL Link 10	<input type="text"/>



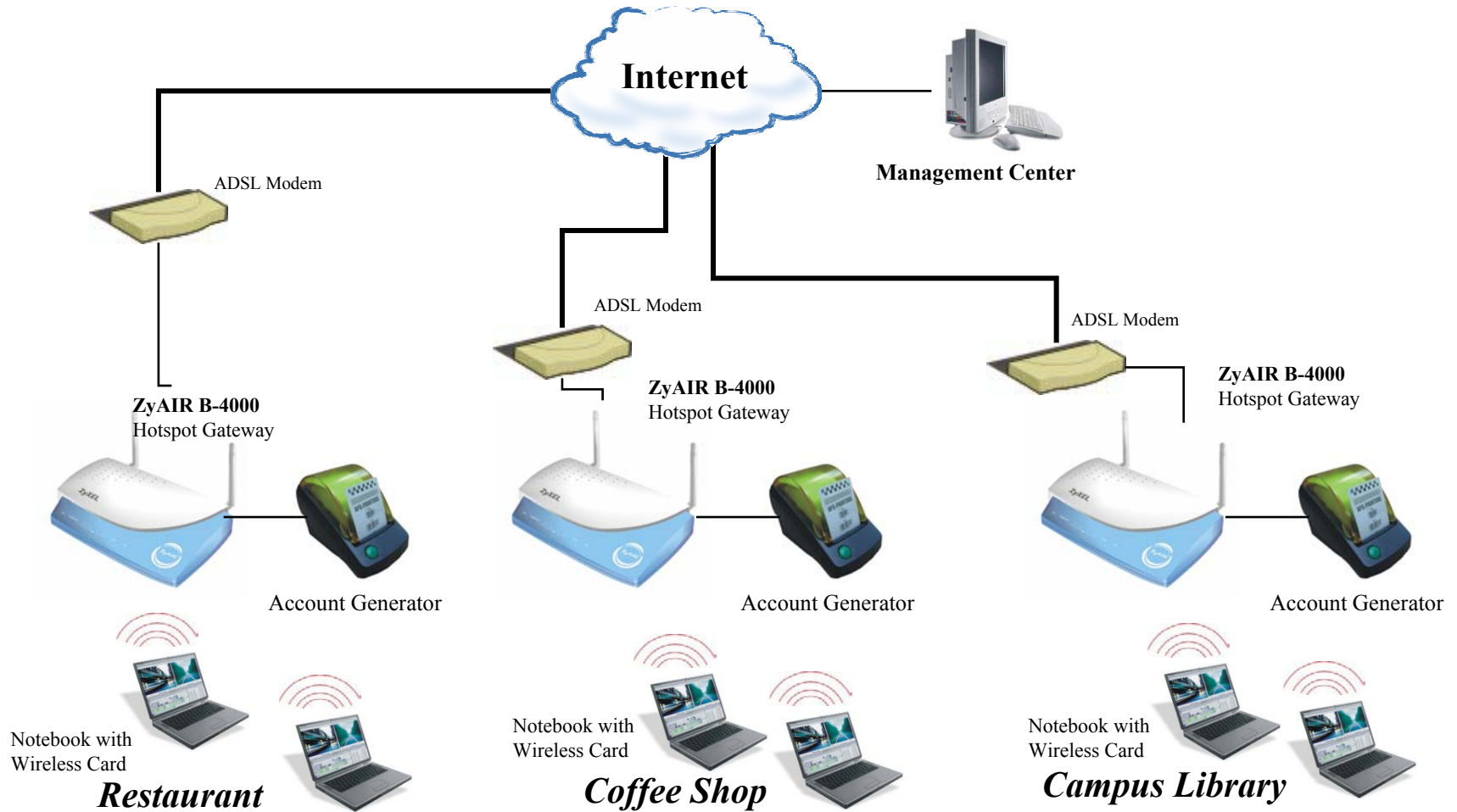
Walled Garden

Walled Garden allows users to access specified URL without authentication



Wall Garden	<input checked="" type="radio"/> Enable <input type="radio"/> Disable
Link 1	Server IP/Domain Name address <input type="text" value="www.openfind.com.tw"/> Link Page: <input type="text" value="http://www.openfind.com.tw"/>
Link 2	Server IP/Domain Name address <input type="text" value="www.yahoo.com"/> Link Page: <input type="text" value="http://www.yahoo.com"/>
Link 3	Server IP/Domain Name address <input type="text"/> Link Page: <input type="text"/>

Deploy Easy Hotspot Kit Easily



The ZyAIR B-4000

- **Provides integrated solution for rapid deployment**
 - ZyAIR B-4000 simplifies the costly and complicated hot spot deployment process by integrating all the key components into a single, easy-to-install and intelligent device.
- **Delivers instant IP connectivity service**
 - The B-4000 helps solve connectivity problems by offering instant Internet access without changing network settings, even if users have a static IP address pre-set.
- **Simplifies user authentication and accounting**
 - The B-4000 with a local printer can validate customer logins and to monitor usage status. Businesses can enforce usage limits based on predefined quotas.
- **Offers Comprehensive security**
 - With Layer 2 isolation support and an SSL login page, the ZyAIR B-4000 provides a fully-secure operating environment.



ZyAIR B-4000 : Wireless Service Gateway

- **Service Gateway + Wireless Access Point + 4 port Ethernet switch**
- **True user plug and play device**
 - **DHCP Server/Relay**
 - **DNS Re-direction**
 - **Email Server Re-direction**
- **Customized login and sign up pages**
- **Walled Garden**
- **VPN pass through**
- **SSL login page**
- **VLAN for Wireless and Wired clients**
- **Support 100 users simultaneously**



ZyAIR Public/Commercial Hotspot

Presented by:

John Castreje
ZyXEL Communications, Inc.